

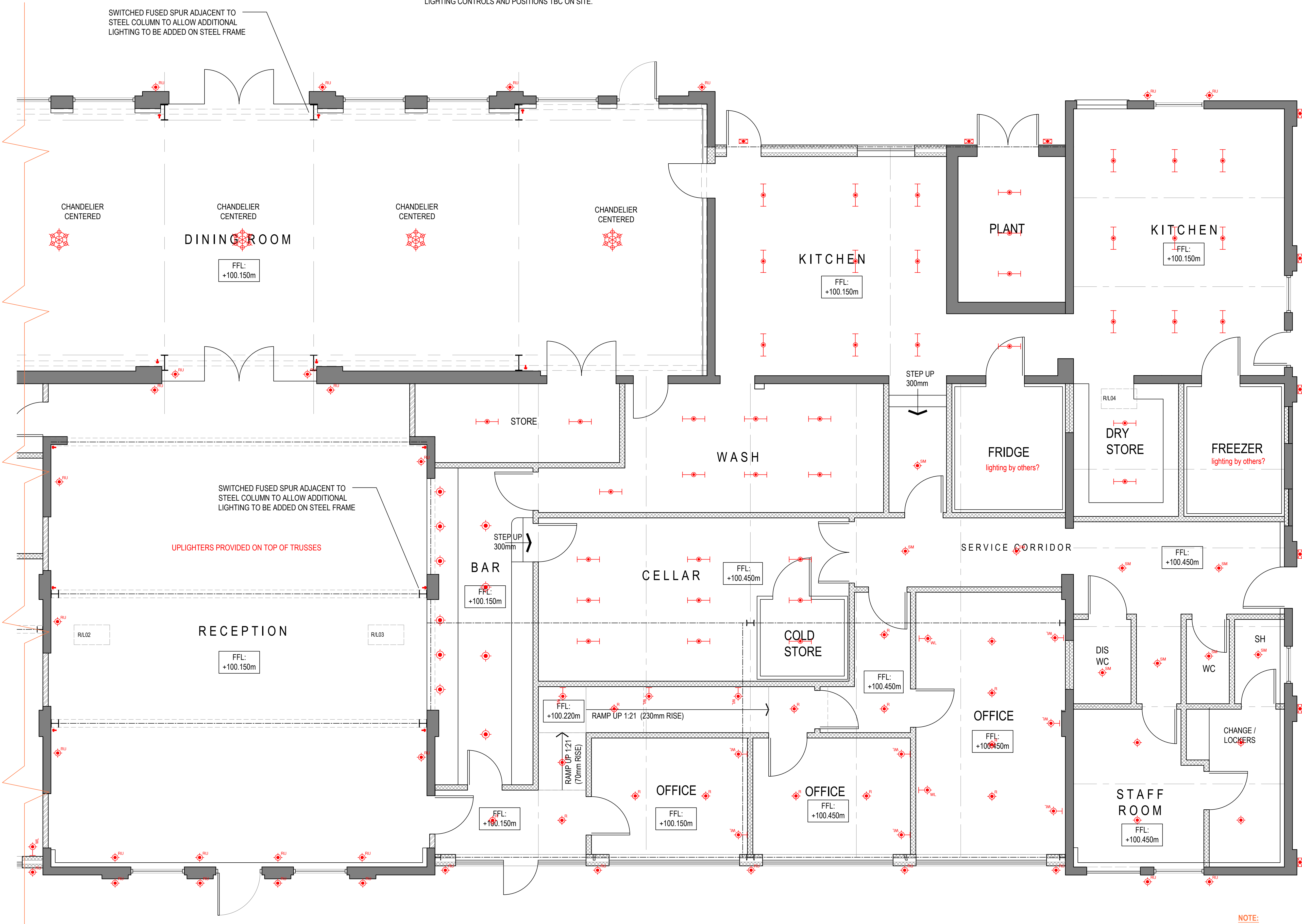
NOTE:
FINAL LIGHTING AND POWER PROVISIONS TO BE CONFIRMED ON SITE.

LIGHTING CONTROLS AND POSITIONS TBC ON SITE.

SWITCHED FUSED SPUR ADJACENT TO
STEEL COLUMN TO ALLOW ADDITIONAL
LIGHTING TO BE ADDED ON STEEL FRAME

SWITCHED FUSED SPUR ADJACENT TO
STEEL COLUMN TO ALLOW ADDITIONAL
LIGHTING TO BE ADDED ON STEEL FRAME

UPLIGHTERS PROVIDED ON TOP OF TRUSSES



MECHANICAL & ELECTRICAL LEGEND

- Single 13 Amp switched socket outlet
- Double 13 Amp switched socket outlet
- Fused 13 Amp outlet
- Socket c/w neon indicator switch above worktop
- Shaver socket
- Pendent light
- Surface mounted light
- Recessed downlighter
- Directional recessed downlighter
- Wall mounted lighting point
- Wall washer lighting point
- Wall mounted picture light
- External wall mounted light
- External bollard light
- Recessed uplighter
- Uplighter
- Chandelier
- LED batten light
- LED track light
- Wall mounted flush light switch
- Wall mounted flush light switch - dimmable
- Wall mounted flush light switch ~ two way
- Wall mounted flush light switch ~ intermediate
- Ceiling mounted pull cord switch
- Door switch
- Passive infra red detector
- Fused spur
- Cooker outlet
- TV coaxial aerial socket outlet
- HDMI Wall mounted
- "Plug in" telephone socket outlet
- Data Point - Floor Mounted
- Data Point - Wall Mounted
- Doorbell
- Doorbell sounder
- Service bell
- Service bell sounder
- Smoke detector ~ mains operated & connected
- Heat detector ~ mains operated & connected
- Combined heat & smoke detector ~ mains fed & connected
- Thermostat
- Mechanical extractor fan ~ 6 litres per second
- Mechanical extractor fan ~ 15 litres per second
- Electric meter
- Gas meter
- Fuse board
- Radiator
- Heated towel rail
- Recessed stereo speaker
- Outside Tap
- Electric Vehicle Charge Point
- Underfloor heating manifold
- Underfloor heating zone c/w reference

Revisions

Project
BARN CONVERSION
TO WEDDING VENUE
BLUEFIELD BARN
APETHORPE

Drawing

FLOOR PLAN
MECHANICAL & ELECTRICAL

PROPOSED

Harris
McCormack
Architects

harris McCormack Architects.co.uk

ArchHaus Peterborough Road Wansford PE8 6JN
(01780) 433 334 architects@harris McCormack Architects.co.uk

Date	Scale	Drawn
OCT 2020	1:50 @ A1	
Job No.	Drawing No.	Revision
19-824	(50)002	A

NOTE:

READ IN CONJUNCTION WITH DWG. (50)001